

**Chase  
Buchanan**  
  
for sale  
020 8744 0101

P  
Resident  
permits  
holders  
only

**Sherland Road  
Twickenham**

£875,000

**ChaseBuchanan**

## Key Features

- Viewings accompanied by Chase Buchanan
- Period home in central Twickenham
- Two double bedrooms
- Garden with rear access
- Scope to extend STPP
- Chain free
- Close to shops and station
- Desirable location
- Excellent schools nearby
- Council Tax Band E

## Description

Situated in an attractive row of similar period properties in this desirable location in central Twickenham, with pleasant views over the residents communal woodland garden.

With a reception room, dining room and kitchen on the ground floor and two double bedrooms and bathroom on the first floor. The rear garden is mainly laid to lawn with rear access. With scope to extend into the loft and rear.

Sherland Road is ideally located to take advantage of all that Twickenham has to offer, from the range of boutique shops in Church Street, to the ambient restaurants and delightful riverside pubs and walks. Situated within a pleasant walk to Marble Hill Gardens along the riverside and within easy access of both St Margarets and Richmond. Commuter links are excellent with Twickenham station providing frequent services to London Waterloo and easy access to the M3/M25 motorways and Heathrow Airport.

The local area is well served for schools, both private and state-run, including St Richard Reynolds rated 'outstanding' by Ofsted.





# Sherland Road

Approximate Gross Internal Floor Area = 87.0 sq m / 937 sq ft

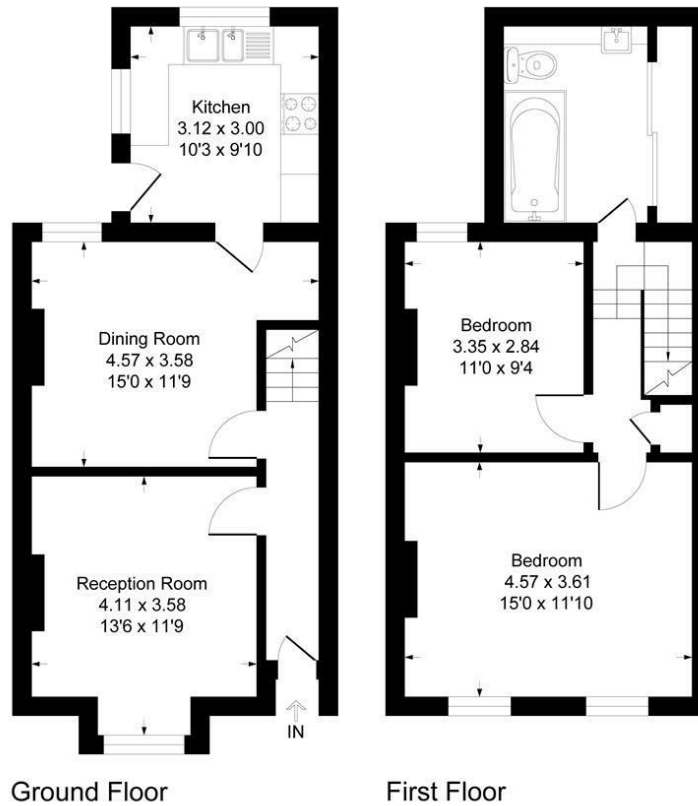
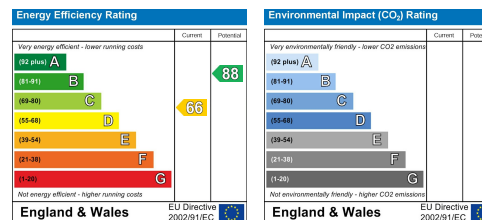


Illustration for identification purposes only, measurements are approximate, not to scale.

Care has been taken in the preparation of these particulars, however, their accuracy is not guaranteed and they do not form part of any contract. Measurements stated must be considered maximum.



For more information or to book a viewing, please contact:

**020 8744 0101**

twickenham@chasebuchanan.london

4 York Street, TW1 3LD

**ChaseBuchanan**